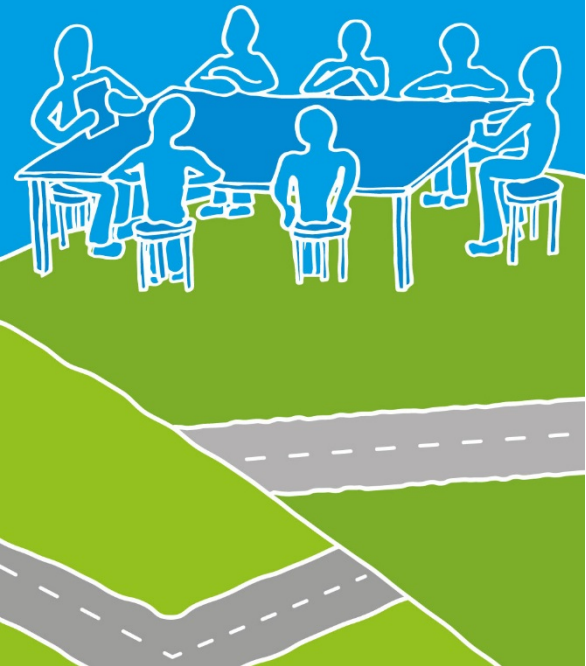


# Our Integration Journey

I tell my story  
only once



## The System Leadership Team - role

- Replaces the former Better Together Sponsor Board and the CSR Reference Group
- System leaders come together to secure improvements in the health & wellbeing of our residents and to re-shape the whole health and social care system pan-Dorset
- Chief Officers and lead members & non-exec chairs
- Common strategic intention, captured in Sustainability & Transformation Plan
- Own the STP, lead and develop its delivery
- Oversee the range of major change projects to reshape the system and drive integration
- Chaired in first year by lead officer responsible for STP
- Agree a pattern of working that includes regular sessions for the group to develop as system leaders, space to share thinking & build relationships

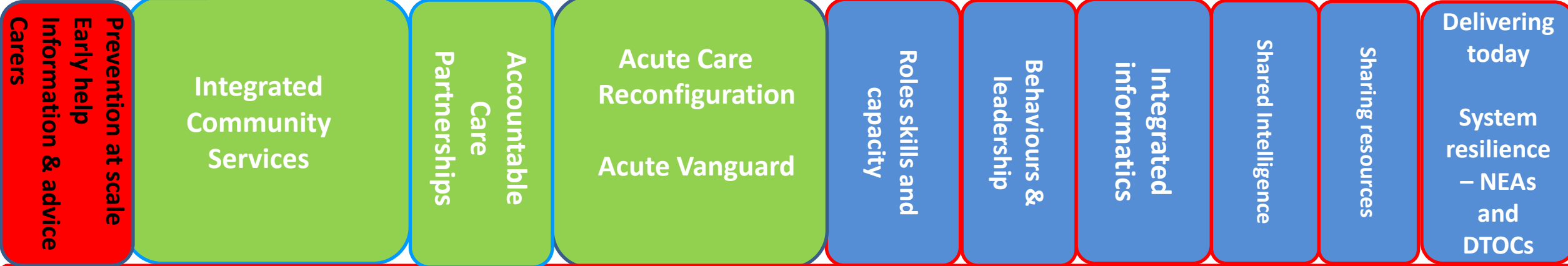
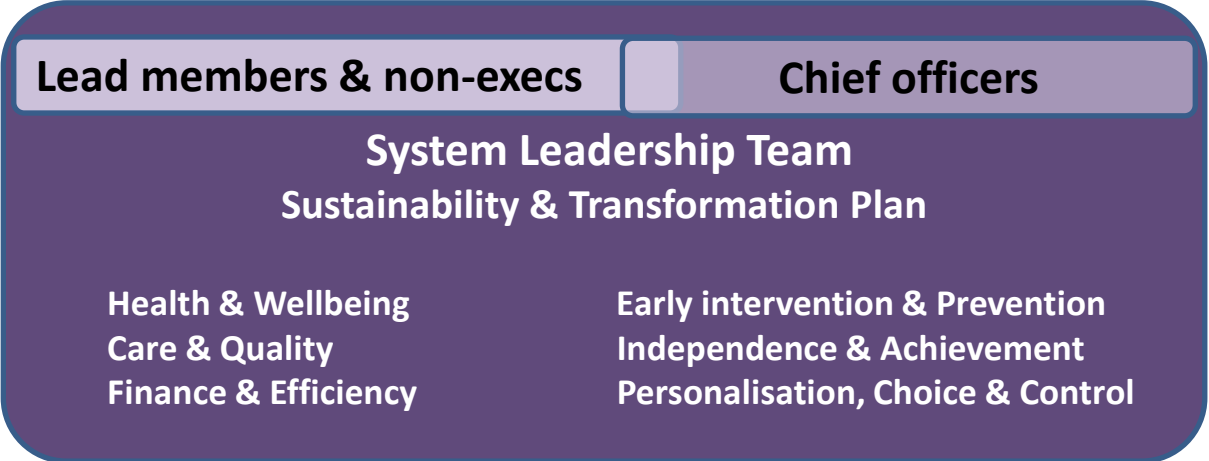
# Proposed System Leadership Map

5 x NHS FT Boards

CCG Governing Body

3 x LA Cabinets

2 x HWBs



**Communications & Engagement**

**Information Sharing & Information Governance**

# An Example - Better Care Fund Governance

5 x NHS FT  
Boards

CCG Governing Body

3 x LA  
Cabinets

2 x HWBs  
Own the BCF

**System Leadership Team**  
Sustainability & Transformation Plan  
BCF is joint operational plan for 16/17. SLT oversees progress, ensures change programmes delivering necessary activity, forum for ensuring accountability of all partners

**Joint Commissioning Board**  
Responsible for delivering BCF as a whole and co-ordinates reporting from other groups with specific, allocated BCF delivery responsibilities

**DCR and Information Sharing Programme Board**  
BCF responsibility for better information sharing

**SRG**  
BCF responsibility for NEAs and DTOCs

**Information Governance Steering Group**