

## COVID 19 – support to implement the Standard Operating Procedure (SOP) for running a medicines re-use scheme in a care home or hospice setting

A standard operating procedure for running a medicines re-use scheme in a care home or hospice setting was published on 28<sup>th</sup> April 2020 by NHS England and NHS Improvement. This procedure is available for use in exceptional circumstances (crisis) during the COVID-19 pandemic only. It is available at:

<https://www.gov.uk/government/publications/coronavirus-covid-19-reuse-of-medicines-in-a-care-home-or-hospice>. Overleaf is the pathway from the SOP that is to be followed when implementing this guidance. The full guidance should be read by all parties before local implementation.

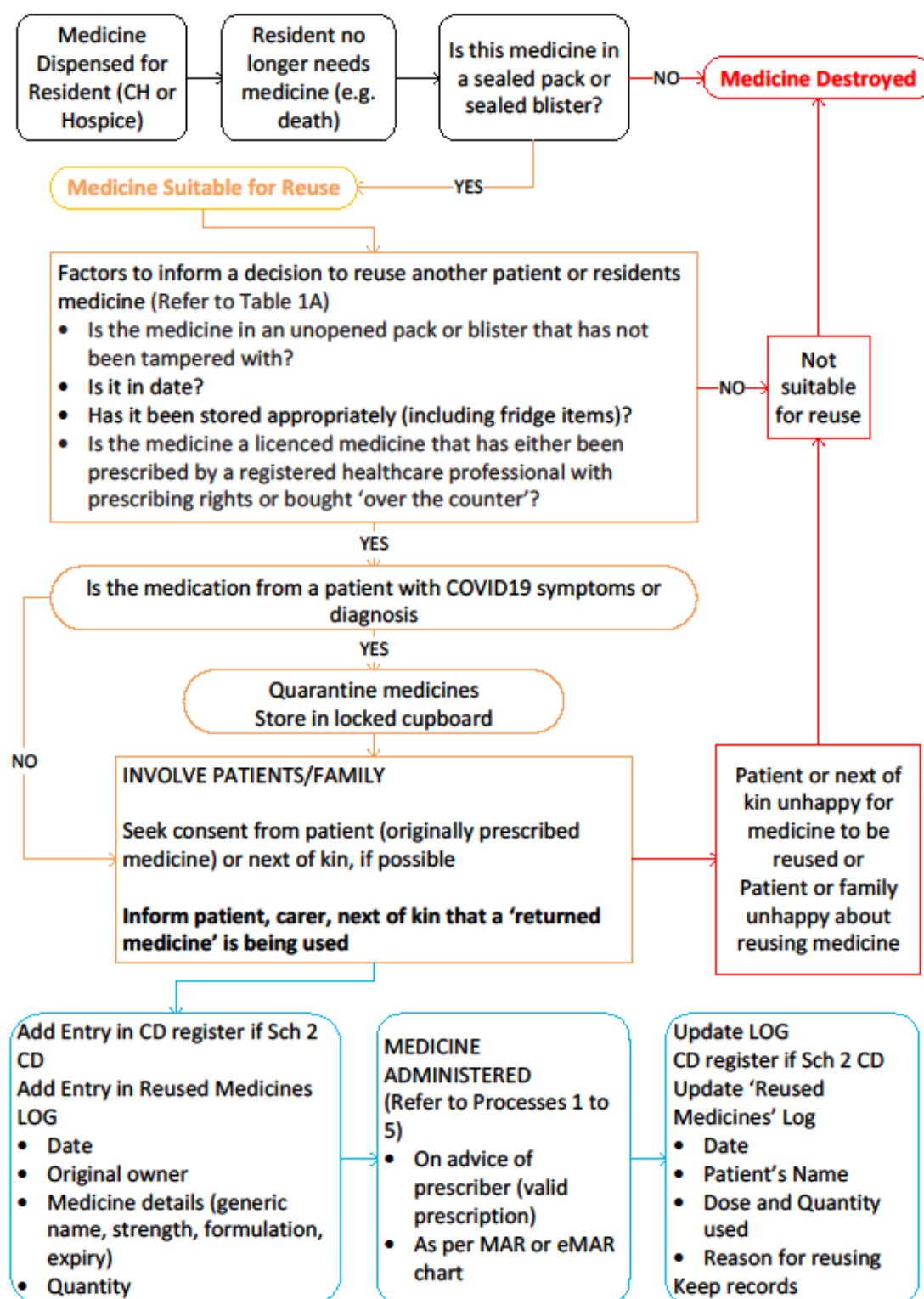
We recommend Primary Care Networks (PCNs) work collaboratively with their Practice medical and pharmacy teams alongside their community pharmacies, Medicines Optimisation in Care Home teams, and the care home and hospice teams and District Health Teams to ensure the implementation of this SOP and related guidance at a local level.

**Medicines covered by the SOP:** This SOP applies to medicines that have been supplied to patients while in a care home or a hospice. It applies to all medicines, including liquid medicines, injections (analgesics, insulin), creams and inhalers, that are in **sealed or blister packs** and **when the criteria in Table 1 of the SOP are met**.

Use of this SOP should only be considered when a discussion with the supplying pharmacy has indicated that no other stocks of a suitable medicine are available and conventional routes of prescribing and supply are not available. **This is not the preferred route of supply of a medicine for an individual patient unless the three key indicators can be confirmed.**

A registered healthcare professional (i.e. visiting pharmacy tech, visiting pharmacist, employed nurse, visiting nurse, visiting GP) will need to assess the medication in line with the SOP to see if it can be re-used. If no suitable person this can be done ‘virtually’ as agreed locally within your PCN.

**Local information:** Whilst all community pharmacies and dispensing practices should be able to fulfil prescriptions for medicines used in palliative care and should be the first port of call to supply there is also an enhanced access to palliative care medicines scheme operating within 15 community pharmacies across Dorset. Information on these and The “COVID-19 – Supporting people in the last weeks of life” guideline which details locally agreed anticipatory medicines for symptom control is available at [www.dorsetformulary.nhs.uk](http://www.dorsetformulary.nhs.uk).



Further information may be sought via: [Medicine.question@dorsetccg.nhs.uk](mailto:Medicine.question@dorsetccg.nhs.uk)

Links to COVID-19 interim resources available on front page of the Dorset Formulary:

[www.dorsetformulary.nhs.uk](http://www.dorsetformulary.nhs.uk)

**\*\*Disclaimer\*\***. This is a rapid impact summary with links to guidance developed to respond to emerging prescribing and medicines management issues during the COVID-19 pandemic. In the current climate, guidance is subject to rapid change, often on a daily basis. Please consider this when utilising this guidance.